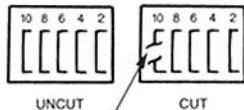
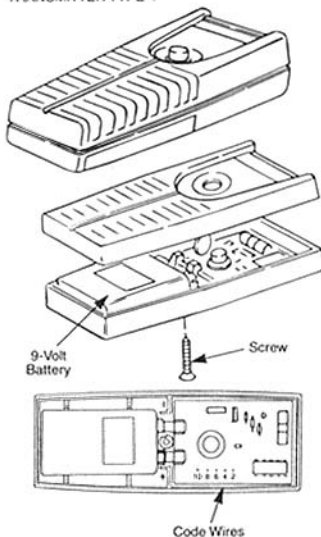


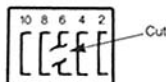
# Transmitter Coding Instructions

## TRANSMITTER TYPE 4

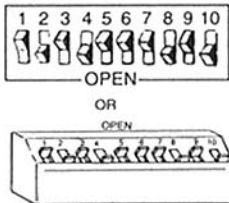


**NOTE:** Cut code wire using a nail clipper or scissors, making sure the cut ends do not touch each other, or any other code wires.

### TRANSMITTER TYPE

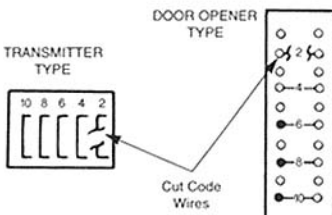


### DOOR OPENER TYPE



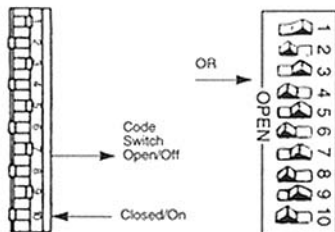
This transmitter utilizes 5 code wires numbered 2, 4, 6, 8 and 10. It can be used with door openers that have either the same 5 code wire type, or with door openers that have a bank of 9 or 10 position digital code switches.

- A. If used with door openers having the same 5 code wire type, simply cut the same code wires in both the transmitter and door opener (as shown below).



- B. If used with door openers having a 10 position digital code switch, FIRST press all odd numbered switches toward the OPEN/OFF position, and all even numbered switches to the ON position (as shown below).

**NOTE:** Some code switches are marked "ON/OFF." Others are marked "OPEN." Please note that the "OFF" position equals the "OPEN" position.



- C. If this transmitter is to be used with a door opener having a 9 position digital code switch, you MUST cut the #10 code wire as shown at left. This is not required with a door opener using a 10 position digital code switch.

The transmitter is now properly coded to the door opener and will open and close the garage door.

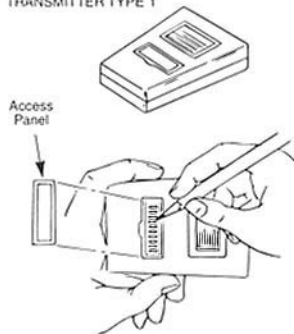
## CODE CHANGE

To change the code, simply cut one or more of the wires in the transmitter and press the corresponding even number of digital code switches in the door opener to the OPEN/OFF position to properly code it with the transmitter.

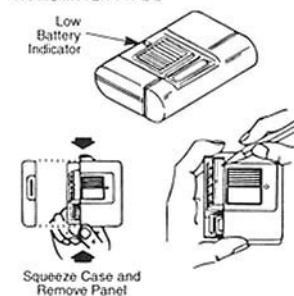
**EXAMPLE:** Cut wire #6 in the transmitter; push digital code switch #6 on the opener to the OPEN/OFF position as shown at left.

# Transmitter Coding Instructions

## TRANSMITTER TYPE 1



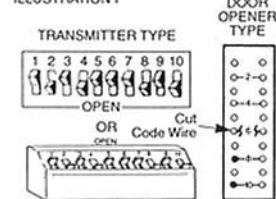
## TRANSMITTER TYPE 2



## TRANSMITTER TYPE 3



## ILLUSTRATION 1



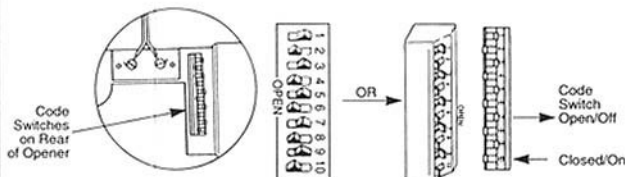
## ⚠ WARNING:

- Disconnect power before any installation or repair.
- Wear safety glasses.

**NOTE:** The transmitters shown on this page utilize a bank of 9 or 10 position digital code switches. They can be used with door openers that also have a bank of 9 or 10 position digital code switches, or with door openers that utilize 5 code wires.

A. If used with a door opener that utilizes the identical digital code switches, set the switches of the transmitter in the same position or pattern as those in the door opener, using a pencil or pen.

**NOTE:** Some code switches are marked "ON/OFF." Others are marked "OPEN." If the switches on the opener differ from those in the transmitter, please note that the "OFF" position equals the "OPEN" position.



B. If the number of switch positions (9 or 10) on the transmitter IS NOT the same as the door opener, or if the transmitter is being used with a door opener that utilizes 5 code wires, follow these instructions:

TRANSMITTER TYPE	DOOR OPENER TYPE	INSTRUCTIONS
9 Switches	10 Switches	Set door opener #10 switch to OPEN/OFF, then match all other switch positions.
10 Switches	9 Switches	Set transmitter #10 switch to OPEN/OFF, then match all other switch positions.
9 Switches	5 Code Wires	Cut #10 door opener code wire, set transmitter <b>ODD</b> switch positions 1-3-5-7-9 to OPEN/OFF, and <b>EVEN</b> switch positions 2-4-6-8 to the ON position (see "code change" below).
10 Switches	5 Code Wires	Set transmitter <b>ODD</b> switch positions 1-3-5-7-9 to OPEN/OFF, and <b>EVEN</b> switch positions 2-4-6-8-10 to the ON position (see "code change" below).

## CODE CHANGE

To change the code, simply cut one or more of the wires in the door opener, and press the corresponding even number of the digital code switches in the transmitter to the OPEN/OFF position.

**EXAMPLE:** Cut wire #6 in the door opener; push code switch #6 on the transmitter to the OPEN/OFF position (see illustration 1).

**NOTE:** All ODD numbered switches are factory set to the OPEN position. All EVEN numbered switches are set to the ON position.

**IMPORTANT:** Do not set all switches in the same position. Do not, however, leave the switches in the "as purchased" position.